

## HJURP monoclonal antibody

**Cat. No. C15200228**

Type: Monoclonal	Specificity: Human, mouse
Size: 50 µg/50 µl	Isotype: IgG1k
Concentration: 1 µg/µl	Host: Mouse
Lot No.: 001	Purity: Affinity purified
Storage buffer: PBS, does not contain any preservative.	Storage conditions: Store at -20°C; for long storage, store at -80°C. Avoid multiple freeze-thaw cycles.
Precautions: This product is for research use only. Not for use in diagnostic or therapeutic procedures.	

Last Data Sheet Update: September 17, 2015

### Description

**Other names:** FAKTS, URLC9, HFLEG1, FLEG1

Monoclonal antibody raised in mouse against HJURP (Holliday Junction Recognition Protein), using a recombinant protein.

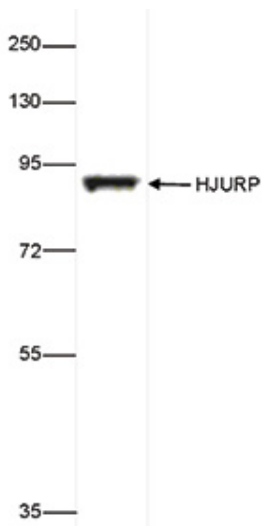
### Applications

Applications	Suggested dilution	References
Western Blotting	1:1,000	Fig 1
Immunofluorescence	1:400	Fig 2

### Target Description

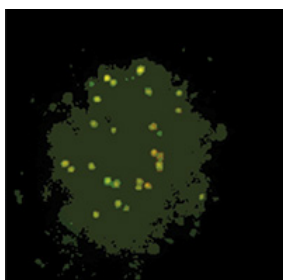
HJURP (UniProt/Swiss-Prot entry Q8NCD3) is a centromeric protein that plays a central role in the incorporation and maintenance of histone H3 variant CENPA at centromeres. It acts as a specific chaperone for CENPA and is required for the incorporation of newly synthesized CENPA molecules into the nucleosomes at replicated centromeres. HJURP prevents CENPA-H4 tetramerization and premature DNA binding by the CENPA-H4 tetramer.

## Validation data



**Figure 1. Western blot analysis using the Diagenode monoclonal antibody directed against HJURP**

HeLa whole cell lysates were analysed by Western blot using the Diagenode antibody against HJURP (Cat. No. C15200228) diluted 1:1,000. The position of the protein of interest is indicated on the right; the marker (in kDa) is shown on the left.



**Figure 2. Immunofluorescence using the Diagenode monoclonal antibody directed against HJURP**

U2OS cells were stained with the Diagenode antibody against HJURP (Cat. No. C15200228) diluted 1:400 and with a rabbit polyclonal CENPA antibody. Secondary antibodies were a goat anti-mouse antibody conjugated to Alexa 488 (green) and a goat anti-rabbit antibody conjugated to Alexa 647 (red).