

H4K20me2 monoclonal antibody - Classic

Cat. No. C15200205

Type: Monoclonal

Source: Mouse

Lot #: 41582

Size: 100 µl

Concentration: 1 µg/µl

Specificity: Human

Purity: Protein G purified

Storage: Store at -20°C; for long storage, store at -80°C.
Avoid multiple freeze-thaw cycles.

Precautions: This product is for research use only. Not for use in diagnostic or therapeutic procedures.

Applications

	Suggested dilution*	Results
ChIP assay	5 µg/ChIP	Figure 1
ICC/IF	1:100-1:1,000	Figure 3
WB	1:1,000-1:10,000	Figure 2

*Optimal dilutions/concentrations should be determined by the researcher.

Results

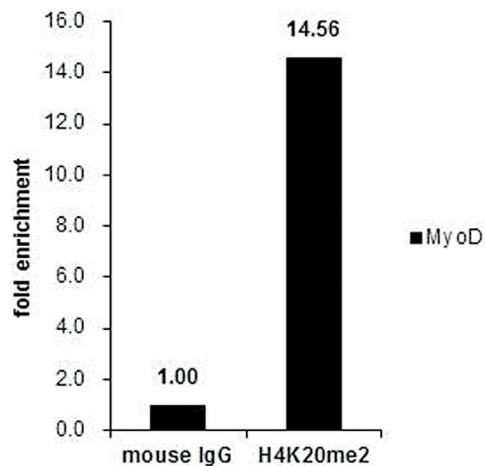


Figure 1. H4K20me2 ChIP results

ChIP was performed with HeLa chromatin extract and 5 µg of either control mouse IgG (Cat. No. C15200001) or H4K20me2 antibody. The precipitated DNA was detected by PCR with primer set targeting to MyoD.

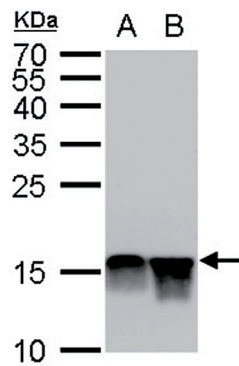


Figure 2. H4K20me2 Western Blot

H4K20me2 antibody detects Histone H4 protein dimethylated at Lys20 by western blot analysis.

A. 30 µg HeLa whole cell extract

B. 30 µg HeLa nuclear extract

H4K20me2 antibody dilution: 1:5,000

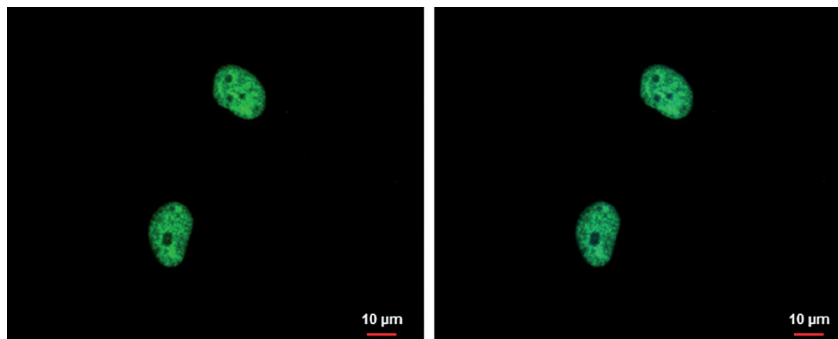


Figure 3. H4K20me2 IF results

H4K20me2 antibody detects Histone H4 dimethylated at Lys20 at nucleus by immunofluorescent analysis.

Sample: HeLa cells were fixed in 4% paraformaldehyde at RT for 15 min.

Green: Histone H4 (dimethylated at Lys20) stained by H4K20me2 antibody diluted 1:500.