

H3T6p polyclonal antibody - Classic

Cat. No. C15410282

Type: Polyclonal

Source: Rabbit

Lot #: 001

Size: 50 µg

Concentration: 0.67 µg/µl

Specificity: Human, mouse, *C. elegans*, rat, chicken, *Xenopus*, *Drosophila*, plant

Purity: Affinity purified

Storage: Store at -20°C; for long storage, store at -80°C. Avoid multiple freeze-thaw cycles.

Precautions: This product is for research use only. Not for use in diagnostic or therapeutic procedures.

Applications

	Suggested dilution	Results
ChIP	2-5 µg/million cells	
Immunohistochemistry	1:200	
IF	1:100	Figure 1
Western blot	1:500	Figure 2, 3
Dot blot	1:1,000	Figure 4

Target description

Phosphorylation as a post-translational modification on histone H3 modulates the ability of proteins to recognize and bind to the H3 tail. When additional modifications to H3 are present, in addition to the native T6 phosphorylation, there is an amplified effect. Several authors suggest that the complexity of these combined PTMs on histone tails should be described as a convoluted language, rather than as a strict code. Since the H3T6 phosphorylation seems to be constitutively present, its de-phosphorylation could be highly significant and affect transcription, repair and replication.

Results

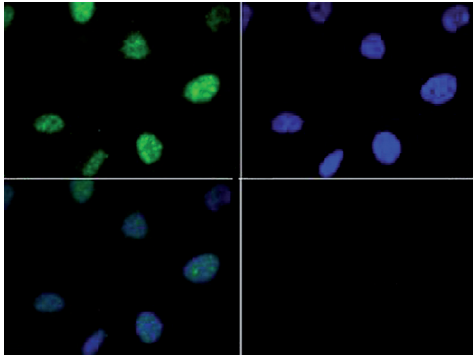


Figure 1. H3T6p antibody IF results

Immunofluorescence of H3T6p antibody. Tissue: HeLa cells. Fixation: 0.5% PFA. Primary antibody used at a 1:100 dilution for 1 h at RT. Secondary antibody: FITC secondary antibody at 1:10,000 for 45 min at RT. Localization: Histone H3T6p is nuclear and chromosomal. Staining: H3T6p is expressed in green and the nuclei are counterstained with DAPI (blue).

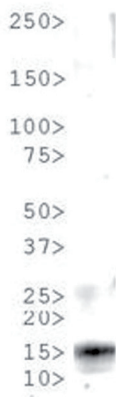


Figure 2. H3T6p antibody Western blot results

Western Blot of H3T6p antibody. 30 μ g *C. elegans* embryo lysate. Primary antibody incubated at a 1:500 dilution overnight at 4°C. Secondary antibody: IRDye800™ rabbit secondary antibody at 1:10,000 for 45 min at RT. Predicted/Observed size: ~15 kDa. Other band(s): None.

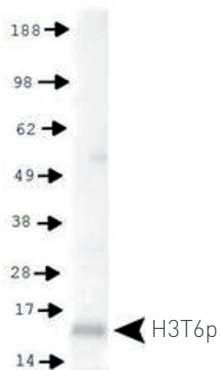


Figure 3. H3T6p antibody Western blot results

Western Blot of H3T6p antibody on 30 μ g HeLa histone extracts. Primary antibody: incubated at a 1:500 dilution overnight at 4°C. Secondary antibody: IRDye800™ rabbit secondary antibody at 1:10,000 for 45 min at RT. Predicted/Observed size: ~15 kDa. Other band(s): None.

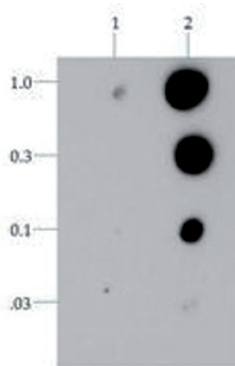


Figure 4. H3T6p antibody dot blot results

Dot Blot of H3T6p antibody. Lane 1: H3T6un. Lane 2: H3T6p. Load: 1, 0.3, 0.1, 0.03 picomoles of peptide. Primary antibody used at a 1:1000 dilution for 45 min at 4°C. Secondary antibody: Dylight™488 rabbit secondary antibody at 1:10,000 for 45 min at RT.

Diagenode sa. BELGIUM | EUROPE

LIEGE SCIENCE PARK
Rue Bois Saint-Jean, 3
4102 Seraing (Ougrée) - Belgium
Tel: +32 4 364 20 50
Fax: +32 4 364 20 51
orders@diagenode.com
info@diagenode.com

Diagenode Inc. USA | NORTH AMERICA

400 Morris Avenue, Suite 101
Denville, NJ 07834 - USA
Tel: +1 862 209-4680
Fax: +1 862 209-4681
orders.na@diagenode.com
info.na@diagenode.com

Last update: September 10, 2014