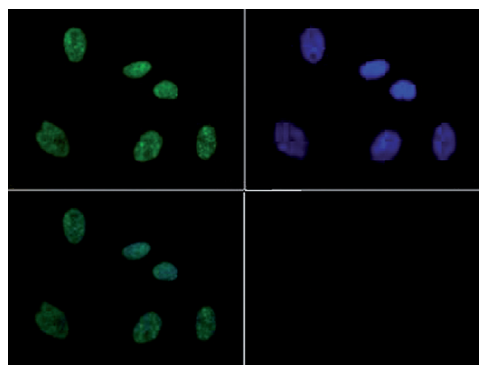


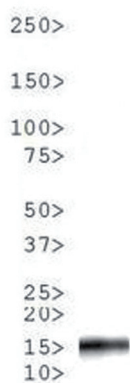


## Results



**Figure 1. H3S10pT11p Immunofluorescence results**

Immunofluorescence of H3S10pT11p antibody. Tissue: HeLa cells. Fixation: 0.5% PFA. Primary antibody: H3S10pT11p antibody at a 1:200 dilution for 1 h at RT. Secondary antibody: FITC secondary antibody at 1:10,000 for 45 min at RT. Localization: H3S10pT11p is nuclear and chromosomal. Staining: H3S10pT11p is expressed in green, nuclei are counterstained with Dapi (blue).



**Figure 2 H3S10pT11p Western blot results**

Western Blot of H3S10pT11p antibody. 30 µg *C. elegans* embryo lysate. Primary antibody: H3S10pT11p at a 1:500 dilution overnight at 4°C. Secondary antibody: IRDye800™ rabbit secondary antibody at 1:10,000 for 45 min at RT. Predicted/Observed size: ~15 kDa. Other band(s): None.



**Figure 3. H3S10pT11p Western blot results**

Western Blot of H3S10pT11p antibody. 30 µg HeLa histone extracts. Primary antibody: H3S10pT11p at a 1:500 dilution overnight at 4°C. Secondary antibody: IRDye800™ rabbit secondary antibody at 1:10,000 for 45 min at RT. Predicted/Observed size: ~15 kDa. Other band(s): None.