

H3K37me1 polyclonal antibody - Classic

Cat. No. C15410295

Type: Polyclonal

Source: Rabbit

Lot #: 001

Size: 50 µg

Concentration: 0.42 µg/µl

Specificity: Human, mouse, C. elegans, rat, chicken, Xenopus, Drosophila, plant

Purity: Affinity purified

Storage: Store at -20°C; for long storage, store at -80°C. Avoid multiple freeze-thaw cycles.

Precautions: This product is for research use only. Not for use in diagnostic or therapeutic procedures.

Applications

	Suggested dilution	Results
Western blot	1 µg/ml	Figure 1
Dot blot	1:1,000	Figure 2, 3

Target description

Chromatin is the arrangement of DNA and proteins in which chromosomes are formed. Correspondingly, chromatin is formed from nucleosomes, which are comprised of a set of four histone proteins (H2A, H2B, H3, H4) wrapped with DNA. Chromatin is a very dynamic structure in which numerous post-translational modifications work together to activate or repress the availability of DNA to be copied, transcribed, or repaired. These marks decide which DNA will be open and commonly active (euchromatin) or tightly wound to prevent access and activation (heterochromatin). Common histone modifications include methylation of lysine and arginine, acetylation of lysine, phosphorylation of threonine and serine, and sumoylation, biotinylation, and ubiquitylation of lysine.

Results

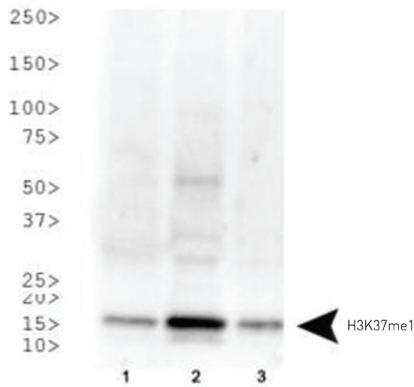


Figure 1. Western Blot

Western Blot with the H3K37me1 antibody. Lane 1: HeLa histone extracts. Lane 2: NIH-3T3 histone extracts. Lane 3: C. elegans embryo lysate. Load: 30 µg per lane. Primary antibody used at 1 µg/ml overnight at 4°C. Secondary antibody: IRDye800™ rabbit secondary antibody at 1:10,000 for 45 min at RT. Predicted/Observed size: ~15 kDa. Other band(s): None.

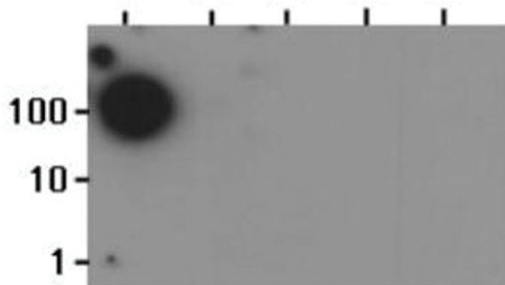


Figure 2. Dot Blot

Dot Blot with the H3K37me1 antibody. Lane 1: K37me1. Lane 2: K36me1. Lane 3: K36me2. Lane 4: K36me3. Lane 5: K36ac. Load: 1, 10, and 100 picomoles of peptide. Primary antibody used at 1:1000 for 45 min at 4°C. Secondary antibody: Dylight™488 rabbit secondary antibody at 1:10,000 for 45 min at RT.

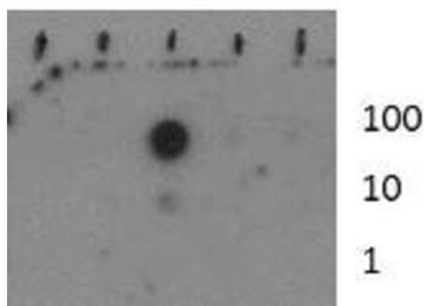


Figure 3. Dot Blot

Dot Blot with the H3K37me1 antibody. Lane 1: K37. Lane 2: K37Ac. Lane 3: K37Me1. Lane 4: K37Me2. Lane 5: K37Me3. Load: 1, 10, and 100 picomoles of peptide. Primary antibody used at 1:1000 for 45 min at 4°C. Secondary antibody: Dylight™488 rabbit secondary antibody at 1:10,000 for 45 min at RT.