

## H3K18me3 polyclonal antibody - Classic

**Cat. No.** C15410292

**Type:** Polyclonal

**Source:** Rabbit

**Lot #:** 001

**Size:** 50 µg

**Concentration:** 0.6 µg/µl

**Specificity:** Human, mouse, *C. elegans*, rat, chicken, *Xenopus*, *Drosophila*, plant

**Purity:** Affinity purified

**Storage:** Store at -20°C; for long storage, store at -80°C. Avoid multiple freeze-thaw cycles.

**Precautions:** This product is for research use only. Not for use in diagnostic or therapeutic procedures.

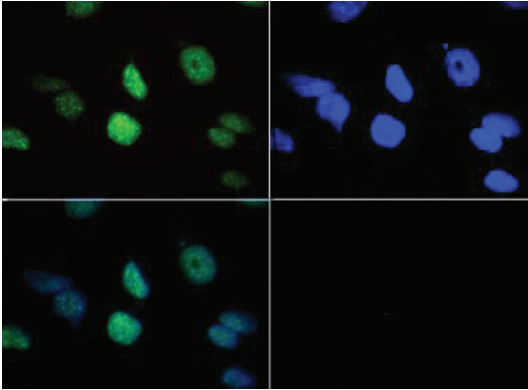
### Applications

	Suggested dilution	Results
ChIP	2-5 µg/million cells	
IF	1:50	Figure 1
Western blot	1:500	Figure 2
Immunochemistry	1:50	
Dot blot	1:1,000	Figure 3

### Target description

Histones are basic nuclear proteins that are responsible for the nucleosome structure of the chromosomal fiber in eukaryotes. This structure consists of approximately 146 bp of DNA wrapped around a nucleosome, an octamer composed of pairs of each of the four core histones (H2A, H2B, H3, and H4). The chromatin fiber is further compacted through the interaction of a linker histone, H1, with the DNA between the nucleosomes to form higher order chromatin structures.

## Results

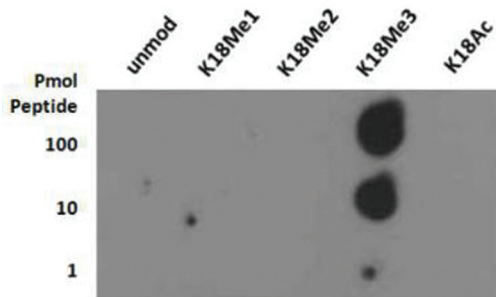
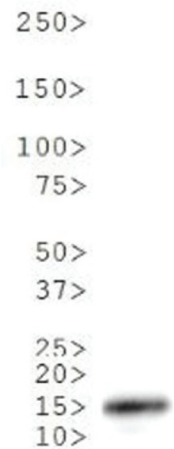


**Figure 1. Immunofluorescence**

Immunofluorescence of H3K18me3 antibody. Tissue: HeLa cells. Fixation: 0.5% PFA. Primary antibody used at a 1:50 dilution for 1 h at RT. Secondary antibody: FITC secondary antibody at 1:10,000 for 45 min at RT. Localization: Histone H3K18me3 is nuclear and chromosomal. Staining: Histone H3K18me3 is expressed in green, nuclei are counterstained with DAPI (blue).

**Figure 2. Western Blot**

Western Blot of H3K18me3 antibody. 30 µg of *C. elegans* embryo lysate. Primary antibody used at a 1:500 dilution overnight at 4°C. Secondary antibody: IRDye800™ rabbit secondary antibody at 1:10,000 for 45 min at RT. Predicted/Observed size: ~15 kDa. Other band(s): None.



**Figure 3. Dot Blot**

Dot Blot of H3K18me3 antibody. Lane 1: K18 unmodified. Lane 2: K18Me1. Lane 3: K18Me2. Lane 4: K18Me3. Lane 5: K18Ac. Load: 1, 10, and 100 picomoles of peptide. Primary antibody used at 0.5 µg/ml for 45 min at 4°C. Secondary antibody: Dylight™488 rabbit secondary antibody at 1:10,000 for 45 min at RT.