

## GST polyclonal antibody - Classic

**Cat. No.** C15430001

**Type:** Polyclonal

**Source:** Goat

**Lot #:** 001

**Size:** 100 µg

**Concentration:** 1.0 µg/µl

**Specificity:** NA

**Purity:** IgG fraction antibody purified from monospecific antiserum by a multi-step process which includes delipidation, salt fractionation and ion exchange chromatography followed by extensive dialysis

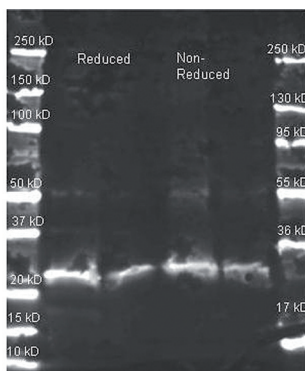
**Storage:** Store at -20°C; for long storage, store at -80°C. Avoid multiple freeze-thaw cycles.

**Precautions:** This product is for research use only. Not for use in diagnostic or therapeutic procedures.

### Applications

	Suggested dilution	Results
ELISA	1:200 - 1:1,000	
Western blot	1:1000 - 1:5,000	Figure 1

### Results



**Figure 1. GST antibody western blot results**

The Diagenode GST antibody was used to detect GST under reducing and non-reducing conditions. Reduced samples of purified GST contained 4% BME and were boiled for 5 minutes. Samples of ~1 and 0.25 µg of protein per lane were run by SDS-PAGE. Protein was transferred to nitrocellulose and probed with the GST antibody.

#### Diagenode sa. BELGIUM | EUROPE

LIEGE SCIENCE PARK  
Rue Bois Saint-Jean, 3  
4102 Seraing (Ougrée) - Belgium  
Tel: +32 4 364 20 50  
Fax: +32 4 364 20 51  
orders@diagenode.com  
info@diagenode.com

#### Diagenode Inc. USA | NORTH AMERICA

400 Morris Avenue, Suite 101  
Denville, NJ 07834 - USA  
Tel: +1 862 209-4680  
Fax: +1 862 209-4681  
orders.na@diagenode.com  
info.na@diagenode.com

**Last update:** September 10, 2014