

PRODUCT NAME		
FKBP3 polyclonal antibody		
Other names: FKBP25, PPlase, Rotamase		
Cat. No. C15310109 (CS-109-100)	Type: Polyclonal	Size: 100 µl
Lot #: A373-004	Source: Rabbit	Concentration: not determined

Description: Polyclonal antibody raised in rabbit against mouse FKBP3 (FK506 Binding Protein 3), using a KLH-conjugated synthetic peptide containing an amino acid sequence from the central part of the protein (1).

Specificity: Mouse: positive
Other species: not tested

Applications	Suggested dilution	References
ELISA	1:100 – 1:200	Fig 1
Western blotting	1:500	Fig 2 (1)

Purity: Whole antiserum from rabbit containing 0.05% azide.

Storage: Store at -20°C; for long storage, store at -80°C. Avoid multiple freeze-thaw cycles.

Precautions: This product is for research use only. Not for use in diagnostic or therapeutic procedures.

References:

(1) Peptide design by Andrea Kranz, Western blot analysis by Heike Petzold and Andrea Kranz, BIOTEC, Dept. of Genomics, Prof. A. F. Stewart, TU Dresden, Tatzberg 47/49, 01307 Dresden, Germany

Last data sheet update: April 7, 2010

Target description

FKBP3 (UniProtKB/Swiss-Prot entry Q00688) is a member of the immunophilin protein family, which plays a role in immunoregulation and basic cellular processes involving protein folding and trafficking. It acts as a receptor for FK506 and rapamycin, two immunosuppressants which inhibit T-cell proliferation. FKBP3 localizes to the nucleus and interacts with the transcription factor YY1 and with histone deacetylases. Therefore, it may play a role in chromatin modification and be important for the regulation of transcription.

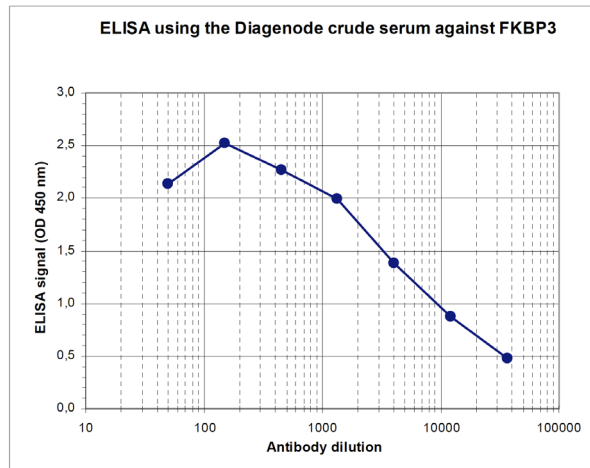


Figure 1
Determination of the titer

To determine the titer, an ELISA was performed using a serial dilution of the Diagenode antibody directed against mouse FKBP3 (Cat. No. CS-109-100). The plates were coated with the peptide used for immunization of the rabbit. By plotting the absorbance against the antibody dilution (Figure 1), the titer of the antibody was estimated to be 1:5,400.

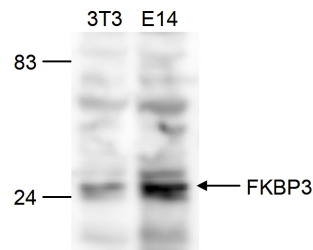


Figure 2
Western blot analysis using the Diagenode antibody directed against FKBP3 (1)

Western blot was performed on whole cell lysates from mouse fibroblasts (NIH3T3) and embryonic stem cells (E14Tg2a) with the Diagenode antibody against mouse FKBP3 (Cat. No. CS-109-100), diluted 1:500 in BSA/PBS-Tween. The molecular weight marker (in kDa) is shown on the left; the location of the protein of interest (expected size: 25 kDa) is indicated on the right.