

PRODUCT NAME		
Ehmt1 polyclonal antibody		
Other names: GLP1, KMT1D		
<b>Cat. No.</b> C15310114 (CS-114-100)	<b>Type:</b> Polyclonal	<b>Size:</b> 100 µl
<b>Lot #:</b> A265-004	<b>Source:</b> Rabbit	<b>Concentration:</b> not determined

**Description:** Polyclonal antibody raised in rabbit against mouse Ehmt1 (euchromatic histone-lysine N-methyltransferase 1), using three KLH-conjugated synthetic peptides containing a sequence from the central part of the protein (1).

**Specificity:** Mouse, human: positive  
Other species: not tested

Applications	Suggested dilution	References
ELISA	1:100 – 1:200	Fig 1
Western blotting	1:500	Fig 2

**Purity:** Whole antiserum from rabbit containing 0.05% azide.

**Storage:** Store at -20°C; for long storage, store at -80°C. Avoid multiple freeze-thaw cycles.

**Precautions:** This product is for research use only. Not for use in diagnostic or therapeutic procedures.

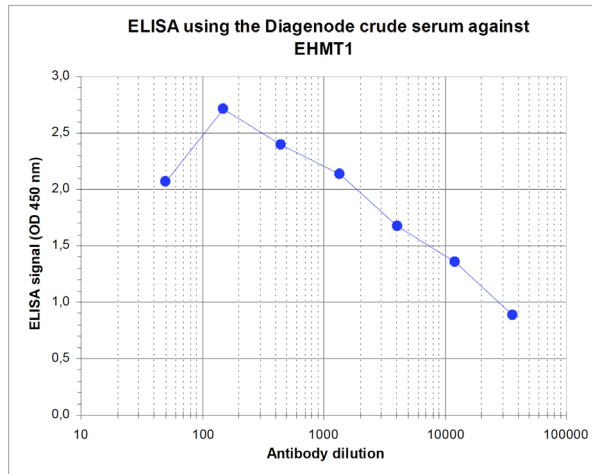
**References:**

(1) Peptide design by Andrea Kranz, Dept. of Genomics, Prof. A. F. Stewart, TU Dresden, Tatzberg 47/49, 01307 Dresden, Germany

**Last data sheet update:** April 6, 2010

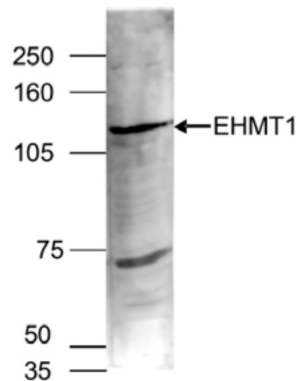
**Target description**

Ehmt1 (UniProt/Swiss-Prot entry Q9H9B1) is a histone methyltransferase which specifically methylates histone H3 on lysine 9. H3K9 methylation represents a marker for epigenetic transcriptional repression. This repression is established by recruiting HP1 proteins to the methylated histone. H3K9 methylation may contribute to silencing of MYC and E2F responsive genes and plays a role in murine embryogenesis.



**Figure 1**  
**Determination of the titer**

To determine the titer, an ELISA was performed using a serial dilution of the Diagenode antibody directed against mouse Ehmt1 [Cat. No. CS-114-100]. The plates were coated with a mix of the peptides used for immunization of the rabbit. By plotting the absorbance against the antibody dilution (Figure 1), the titer of the antibody was estimated to be 1:10,600.



**Figure 2**  
**Western blot analysis using the Diagenode antibody directed against Ehmt1**

Nuclear extracts of HeLa cells (40 µg) were analysed by Western blot using the Diagenode antibody against Ehmt1 [Cat. No. CS-114-100] diluted 1:1,000 in TBS-Tween containing 5% skimmed milk. The position of the protein of interest (expected size: 138 kDa) is indicated on the right; the marker (in kDa) is shown on the left.