

ERR alpha polyclonal antibody - Classic

Cat. No. C15410230

Type: Polyclonal

Source: Rabbit

Lot #: 39764

Size: 25 µl/100 µl

Concentration: 0.7 µg/µl

Specificity: Human, mouse, rat

Purity: Purified by antigen-affinity chromatography.

Storage: Store at -20°C; for long storage, store at -80°C. Avoid multiple freeze-thaw cycles.

Precautions: This product is for research use only. Not for use in diagnostic or therapeutic procedures.

Applications

	Suggested dilution*	Results
ChIP assay	5 µg/ChIP	Figure 3
Immunoprecipitation	1:100-1:500	Figure 1
Western blot	1:500-1:3,000	Figure 2, 4, 5

*Optimal dilutions/concentrations should be determined by the researcher.

Results

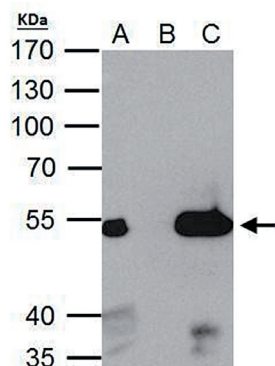


Figure 1. IP

ERR alpha antibody immunoprecipitates ERR alpha protein in IP experiments. IP Sample: 293T whole cell extract A. 40 µg 293T whole cell extract B. Control with 2 µg of preimmune rabbit IgG C. Immunoprecipitation of ERR alpha protein by 2 µg of ERR alpha antibody. The immunoprecipitated ERR alpha protein was detected by western blot with the ERR alpha antibody (Cat. No. C15410230) diluted 1:1,000.

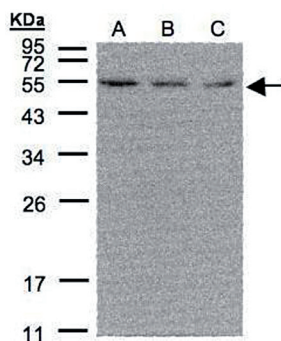


Figure 2. Western blot

Sample: 30 µg of whole cell lysate
A: 293T
B: A431
C: H1299
12% SDS PAGE
C15410230 diluted 1:500

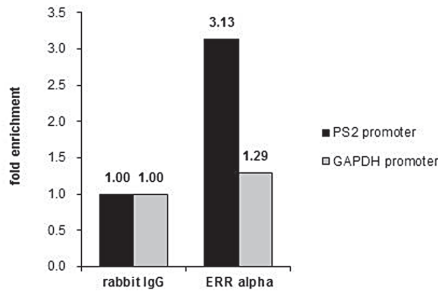


Figure 3. ERR alpha antibody ChIP results

ChIP was performed with MCF-7 chromatin extract and 5 µg of either control rabbit IgG or ERR alpha antibody. The precipitated DNA was detected by PCR with primer set, targeting to PS2 promoter, used as a positive control or GAPDH promoter, used as a negative control.

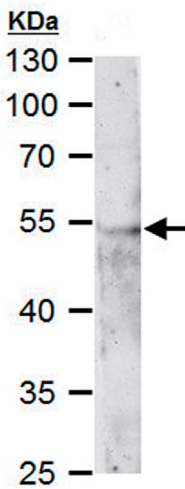


Figure 4. ERR alpha antibody WB results

ERR alpha antibody detects ERR alpha protein by western blot analysis.
 50 µg mouse kidney extract
 10 % SDS-PAGE
 ERR alpha antibody (cat. No. C15410230) dilution 1:500

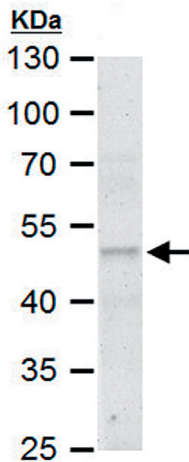


Figure 5. ERR alpha antibody WB results

ERR alpha antibody detects ERR alpha protein by western blot analysis.
 50 µg rat kidney extract
 10 % SDS-PAGE
 ERR alpha antibody (Cat. No. C15410230) dilution 1:500