

ERR alpha polyclonal antibody - Classic

Cat. No. C15410229

Type: Polyclonal

Source: Rabbit

Lot #: 40471

Size: 25 µl/100 µl

Concentration: 0,93 µg/µl

Specificity: Human.

Purity: Purified by antigen-affinity chromatography.

Storage: Store at -20°C; for long storage, store at -80°C.
Avoid multiple freeze-thaw cycles.

Precautions: This product is for research use only. Not for use in diagnostic or therapeutic procedures.

Applications

	Suggested dilution	Results
ChIP assay	5 µg	Figure 3
Immunoprecipitation	1:100-1:500	Figure 1
Western blot	1:500-1:3,000	Figure 2

*Optimal dilutions/concentrations should be determined by the researcher.

Results

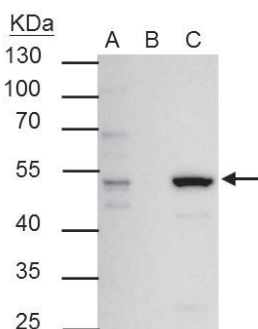


Figure 1. ERR alpha antibody IP results

ERR alpha antibody immunoprecipitates ERR alpha protein in IP experiments. IP Sample: 293T whole cell extract A: 30 µg whole cell extract of ERR alpha protein expressing 293T cells B: Control with 2.5 µg of pre-immune rabbit IgG (Cat. No. C15410206) C: Immunoprecipitation of ERR alpha by 2.5 µg of ERR alpha antibody (Cat. No. C15410229). The immunoprecipitated ERR alpha protein was detected by western blot with the ERR alpha antibody diluted 1:1,000.

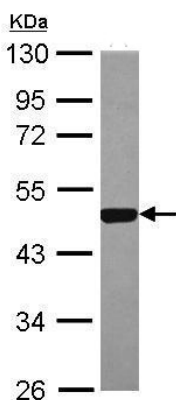


Figure 2. Western blot

Sample: 30 µg of whole cell lysate (293T cells)
10% SDS PAGE
C15410229 diluted 1:2,000

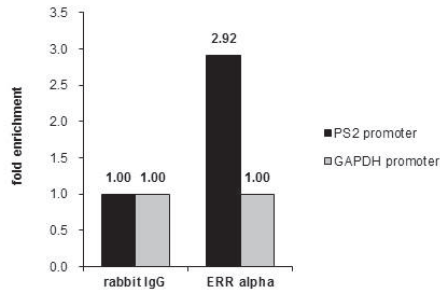


Figure 3. ERR alpha antibody ChIP results

ChIP was performed with MCF-7 chromatin extract and 5 μ g of either control rabbit IgG or ERR alpha antibody. The precipitated DNA was detected by PCR with primer set targeting to PS2 promoter used as positive control or GAPDH promoter, used as negative control.

Diagenode sa. BELGIUM | EUROPE

LIEGE SCIENCE PARK
Rue Bois Saint-Jean, 3
4102 Seraing (Ougrée) - Belgium
Tel: +32 4 364 20 50
Fax: +32 4 364 20 51
orders@diagenode.com
info@diagenode.com

Diagenode Inc. USA | NORTH AMERICA

400 Morris Avenue, Suite 101
Denville, NJ 07834 - USA
Tel: +1 862 209-4680
Fax: +1 862 209-4681
orders.na@diagenode.com
info.na@diagenode.com

Last update: September 10, 2014