

PRODUCT NAME		
EIF2C1/2 polyclonal antibody		
Other names: Argonaute-1, AGO1, EIFC2, GERP95, Q99 / Argonaute-2, AGO2, PPD, MGC3183, Q10		
Cat. No. C15310141 (CS-141-100)	Type: Polyclonal ChIP-grade	Size: 100 µl
Lot #: A452-001	Source: Rabbit	Concentration: not determined

Description: Polyclonal antibody raised in rabbit against human EIF2C1/2 (eukaryotic translation initiation factor 2C1 and 2), using a KLH-conjugated synthetic peptide containing a sequence from the C-terminal part of both EIF2C1 and EIF2C2.

Specificity: Human: positive
Other species: not tested

Applications	Suggested dilution	References
ELISA	1:100	Fig 1
Western blotting	1:1,000	Fig 2

Purity: Whole antiserum from rabbit containing 0.05% azide.

Storage: Store at -20°C; for long storage, store at -80°C. Avoid multiple freeze-thaw cycles.

Precautions: This product is for research use only. Not for use in diagnostic or therapeutic procedures.

Last data sheet update: March 18, 2010

Target description

EIF2C1 and 2 [UniProtKB/Swiss-Prot entries Q9UL18 and Q9UKV8] are members of the Argonaute family. These proteins are involved in short-interfering-RNA-mediated gene silencing. This process is mediated by the RISC (RNA induced silencing complex), a multicomponent nuclease that is able to degrade double stranded RNAs. The mRNA degradation is triggered by the association of specific siRNAs with their homologous mRNAs. EIF2C2 has been shown to be essential for embryonic development.

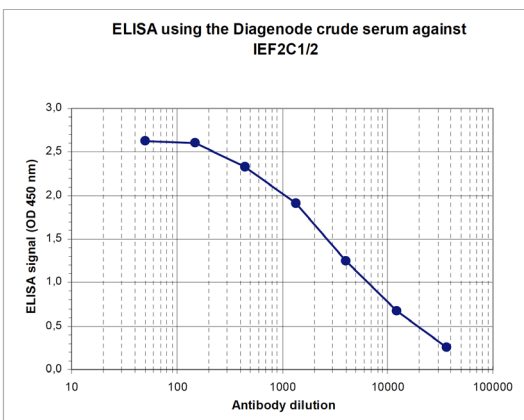


Figure 1
Determination of the titer

To determine the titer, an ELISA was performed using a serial dilution of the Diagenode antibody directed against human EIF2C1/2 [Cat. No. CS-141-100]. The plates were coated with the peptide used for immunization of the rabbit. By plotting the absorbance against the antibody dilution (Figure 1), the titer of the antibody was estimated to be 1:3,500.

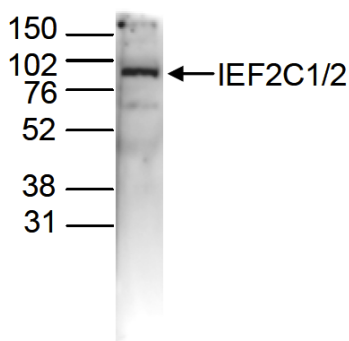


Figure 2
Western blot analysis using the Diagenode antibody directed against EIF2C1/2

Whole cell extracts of U2OS cells (40 µg) were analysed by Western blot using the Diagenode antibody against EIF2C1/2 [Cat. No. CS-141-100] diluted 1:1,000 in TBS-Tween containing 5% skimmed milk. The position of the protein of interest is indicated on the right (expected size: 97 kDa); the marker (in kDa) is shown on the left.