

## EED polyclonal antibody - Pioneer

**Other name:** HEED, WAIT1

**Cat. No.** 15410319

**Type:** Polyclonal

**Source:** Rabbit

**Lot #:** G1061-0041

**Size:** 50 µg /34 µl

**Concentration:** 1.5 µg/µl

**Specificity:** Human: positive / Other species: not tested

**Purity:** Protein G purified polyclonal antibody in PBS containing 0.05% azide and 0.05% ProClin 300.

**Storage:** Store at -20°C; for long storage, store at -80°C  
Avoid multiple freeze-thaw cycles

**Precautions:** This product is for research use only  
Not for use in diagnostic or therapeutic procedures

**Description :** Polyclonal antibody raised in rabbit against human EED (Embryonic Ectoderm Development), using an expression vector containing the full length protein.

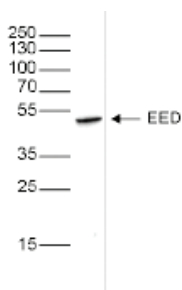
### Applications

Applications	Suggested dilution/amount	Results
Western blotting	1:2,000	Fig 1

### Target description

EED (UniProtKB/Swiss-Prot entry 075530) is a component of the Polycomb group (PcG) protein PRC2. Polycomb group proteins form multimeric protein complexes and are involved in maintaining the transcriptional repressive state of genes over successive cell generations. PRC2 methylates Lys 9 and Lys 27 of histone H3, leading to transcriptional repression of the affected target gene. PRC2 can interact with histone deacetylase proteins, thereby also mediating gene repression through histone deacetylation. Further, the PRC2 complex may serve as a recruiting platform for DNA methyltransferases, linking different epigenetic repression systems. Genes repressed by the PRC2/EED-EZH2 complex include the HOX cluster, MYT1 and CDKN2A

### Results



#### Western blot analysis using the Diagenode antibody directed against EED

Whole cell extracts (25 µg) from HeLa cells were analysed by Western blot using the Diagenode antibody against EED (Cat. No. C15410319) diluted 1:2,000 in TBS-Tween containing 5% skimmed milk. The position of the protein of interest is indicated on the right (expected size: 50 kDa); the marker (in kDa) is shown on the left.

#### Diagenode sa. BELGIUM | EUROPE

LIEGE SCIENCE PARK  
Rue Bois Saint-Jean, 3  
4102 Seraing (Ougrée) - Belgium  
Tel: +32 4 364 20 50  
Fax: +32 4 364 20 51  
orders@diagenode.com  
info@diagenode.com

#### Diagenode Inc. USA | NORTH AMERICA

400 Morris Avenue, Suite 101  
Denville, NJ 07834 - USA  
Tel: +1 862 209-4680  
Fax: +1 862 209-4681  
orders.na@diagenode.com  
info.na@diagenode.com

Last update: February 12, 2015