

## DP1 polyclonal antibody - Classic

**Cat. No.** C15410228

**Type:** Polyclonal

**Source:** Rabbit

**Lot #:** 40422

**Size:** 25 µl/100 µl

**Concentration:** 1 µg/µl

**Specificity:** Human.

**Purity:** Purified by antigen-affinity chromatography.

**Storage:** Store at -20°C; for long storage, store at -80°C. Avoid multiple freeze-thaw cycles.

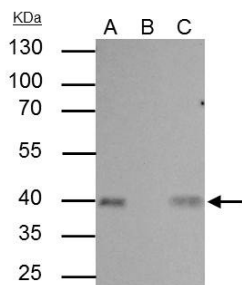
**Precautions:** This product is for research use only. Not for use in diagnostic or therapeutic procedures.

### Applications

	Suggested dilution*	Results
Immunoprecipitation	1:100-1:500	Figure 1
Western blot	1:5,000-1:20,000	Figure 2

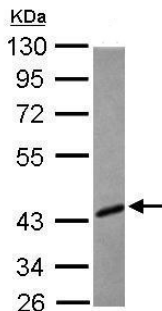
\*Optimal dilutions/concentrations should be determined by the researcher.

### Results



**Figure 1. DP1 antibody IP results**

DP1 antibody immunoprecipitates DP1 protein in IP experiments. IP Sample: 293T whole cell extract A : 40 µg whole cell extract of DP1 protein expressing 293T cells B : Control with 2.5 µg of pre-immune rabbit IgG (Cat. No. C15410206) C : Immunoprecipitation of DP1 by 2.5 µg of DP1 antibody (Cat. No. C15410228) 10% SDS-PAGE The immunoprecipitated DP1 protein was detected by DP1 antibody (Cat. No. C15410228) diluted 1:1,000.



**Figure 2. Western blot**

Sample: 30 µg of whole cell lysate (raji cell)  
10% SDS PAGE  
C15410228 diluted 1:10,000