

PRODUCT NAME		
Cre polyclonal antibody		
Other names: Cre recombinase		
Cat. No. CS-168-100	Type: Polyclonal	Size: 100 µl
Lot #: A1040-004	Source: Rabbit	Concentration: not determined

Description: Polyclonal antibody raised in rabbit against Cre recombinase using a KLH-conjugated synthetic peptide located at the C-terminal part of the protein (1).

Applications	Suggested dilution	References
ELISA	1:100	Fig 1
Western blotting	1:500	Fig 2, (1)

Purity: Whole antiserum from rabbit containing 0.05% azide.

Storage: Store at -20°C; for long storage, store at -80°C. Avoid multiple freeze-thaw cycles.

Precautions: This product is for research use only. Not for use in diagnostic or therapeutic procedures.

References citing this antibody

(1) Peptide design and Western blot analysis by Andrea Kranz, BIOTEC, Dept. of Genomics, Prof. A. F. Stewart, TU Dresden, Tatzberg 47/49, 01307 Dresden, Germany

Last data sheet update: June 25, 2010

Target description

Cre recombinase originates from bacteriophage P1 and recognizes loxP sites in the genome. It catalyzes recombination between two loxP sites, thereby excising the intervening DNA sequence. Cre recombinase is used as a tool for the generation of transgenic animals.

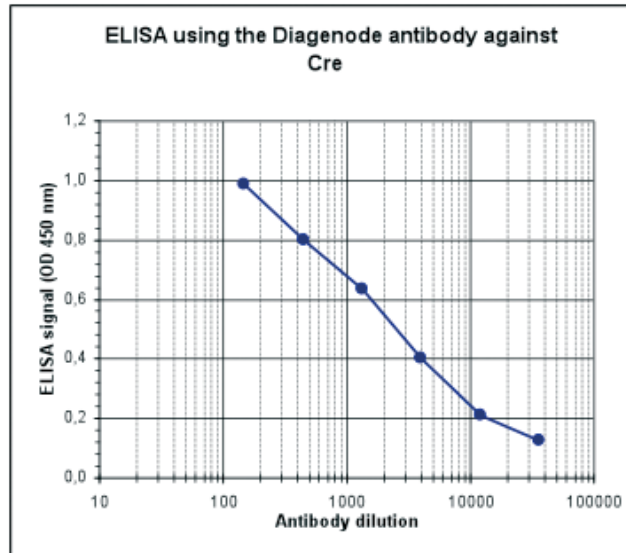


Figure 1

Determination of the antibody titer

To determine the titer, an ELISA was performed using a serial dilution of the Diagenode antibody directed against Cre (cat. No. CS-168-100) in antigen coated wells. By plotting the absorbance against the antibody dilution (Figure 1), the titer of the antibody was estimated to be 1:2,900.

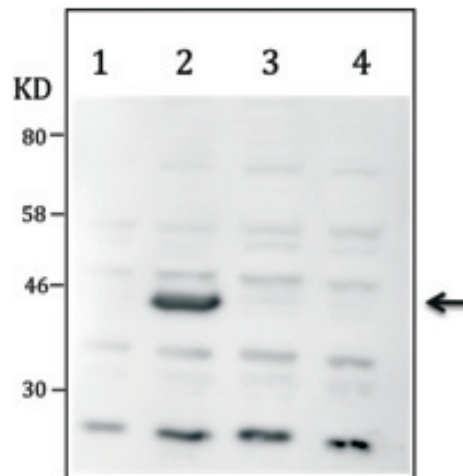


Figure 2

Western blot analysis using the Diagenode antibody directed against Cre [1]

Western blot was performed on whole cell lysates from untransfected 293 cells (lane 1), or 293 cells transfected with Cre (lane 2), Dre (lane 3) or Flp (lane 4) with the Diagenode antibody against Cre (cat. No. CS-168-100), diluted 1:500 in BSA/PBS-Tween. The molecular weight marker (in KD) is shown on the left; the location of the protein of interest (expected size: 38 KD) is indicated on the right.