

PRODUCT NAME CHD5 polyclonal antibody		
Cat. No. C15310121 (CS-121-100)	Type: Polyclonal	Size: 100 µl
Lot #: A473-002	Source: Rabbit	Concentration: not determined

Description: Polyclonal antibody raised in rabbit against human CHD5 (chromodomain helicase DNA binding protein 5), using two KLH-conjugated synthetic peptides containing a sequence from the N-terminus and from the central part of the protein, respectively.

Specificity: Human: positive
Other species: not tested

Applications	Suggested dilution	References
ELISA	1:500 – 1:1,000	Fig 1
Western blotting	1:1,000	Fig 2

Purity: Whole antiserum from rabbit containing 0.05% azide.

Storage: Store at -20°C; for long storage, store at -80°C. Avoid multiple freeze-thaw cycles.

Precautions: This product is for research use only. Not for use in diagnostic or therapeutic procedures.

Last data sheet update: March 23, 2010

Target description

CHD5 (UniProt/Swiss-Prot entry Q8TDI0) belongs to a group of SWI/SNF proteins called CHD proteins. Beside a SWI/SNF-like helicase/ATPase domain, these proteins contain a DNA-binding domain and a chromodomain that is able to directly modify chromatin structure, thereby affecting gene expression. CHD5 may also be involved in neural development and in the pathogenesis of neural tumors.

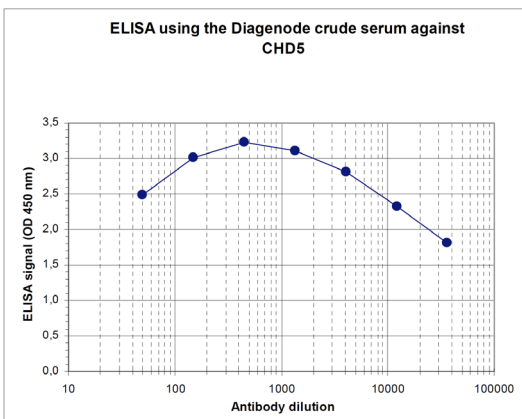


Figure 1
Determination of the titer

To determine the titer, an ELISA was performed using a serial dilution of the Diagenode antibody directed against human CHD5 (Cat. No. CS-121-100). The plates were coated with the peptides used for immunization of the rabbit. By plotting the absorbance against the antibody dilution (Figure 1), the titer of the antibody was estimated to be 1:93,500.

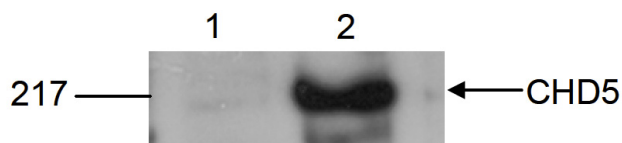


Figure 2
Western blot analysis using the Diagenode antibody directed against CHD5

HeLa cells were transfected with CHD5 and analysed by Western blot. Western blot was performed using 15 to 30 µg nuclear extracts and the Diagenode antibody against human CHD5 (Cat. No. CS-121-100). The antibody was diluted 1:1,000 in TBS-Tween containing 2% milk powder. The position of the protein of interest (expected size: 223 kDa) is indicated on the right; the marker (in kDa) is shown on the left. Lane 1 shows the result of the untransfected cells, lane 2 of the transfected cells. Western blot performed by Sonia Mulero, Spanish National Cancer Research Centre (CNIO), Madrid, Spain.