

PRODUCT NAME		
CHD1 polyclonal antibody		
Other names: CHD-1, ATPase DNA-binding protein 1		
Cat. No. C15410020 (pAb-020-050)	Type: Polyclonal	Size: 50 µg/ 25 µl
Lot #: 001	Source: Rabbit	Concentration: 2.0 µg/µl

Description: Polyclonal antibody raised in rabbit against human CHD1 (Chromodomain helicase DNA binding protein 1), using a GST fused recombinant protein.

Specificity: Human: positive
Other species: not tested

Applications	Suggested dilution	References
Western blotting	1:500	Fig1

Purity: Protein G purified polyclonal antibody in PBS containing 0.05% azide and 0.05% ProClin 300.

Storage: Store at -20°C; for long storage, store at -80°C. Avoid multiple freeze-thaw cycles.

Precautions: This product is for research use only. Not for use in diagnostic or therapeutic procedures.

Last data sheet update: April 9, 2010

Target description

CHD1 (UniProtKB/Swiss-Prot entry O14646) is an ATP-dependent chromatin remodeling factor, containing two tandem chromodomains. In human both chromodomains are essential for specific binding to histone H3, methylated at lysine 4. CHD1 belongs to the SNF2/RAD54 helicase family and contains also one helicase ATP-binding domain and one helicase C-terminal domain. It may play an important role in gene regulation.

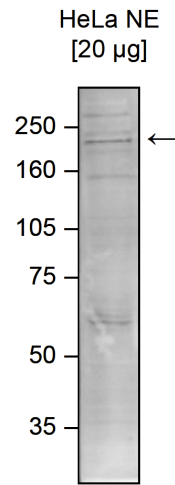


Figure 1

Western blot analysis using the Diagenode antibody directed against CHD1

Western blot was performed on nuclear extracts from HeLa cells (HeLa NE, 20 µg) with the Diagenode antibody against CHD1 (Cat. No. pAb-020-050) diluted 1:500 in TBS-Tween containing 5% skimmed milk. The molecular weight marker (in kDa) is shown on the left; the location of the protein of interest is indicated on the right.