

PRODUCT NAME		
CHD1 polyclonal antibody		
Other names: CHD-1, ATPase DNA-binding protein 1		
<b>Cat. No.</b> C15310020 (CS-020-100)	<b>Type:</b> Polyclonal	<b>Size:</b> 100 µl
<b>Lot #:</b> 001	<b>Source:</b> Rabbit	<b>Concentration:</b> not determined

**Description:** Polyclonal antibody raised in rabbit against human CHD1 (Chromodomain helicase DNA binding protein 1), using a GST fused recombinant protein.

**Specificity:** Human: positive  
Other species: not tested

Applications	Suggested dilution	References
Western blotting	1:500	Fig 1

**Purity:** Whole antiserum from rabbit containing 0.05% azide.

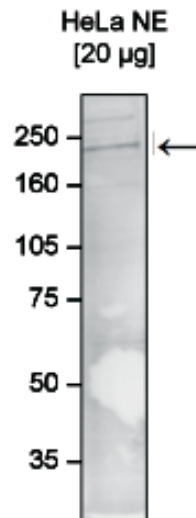
**Storage:** Store at -20°C; for long storage, store at -80°C. Avoid multiple freeze-thaw cycles.

**Precautions:** This product is for research use only. Not for use in diagnostic or therapeutic procedures.

**Last data sheet update:** April 9, 2010

**Target description**

CHD1 (UniProtKB/Swiss-Prot entry O14646) is an ATP-dependent chromatin remodeling factor, containing two tandem chromodomains. In human both chromodomains are essential for specific binding to histone H3, methylated at lysine 4. CHD1 belongs to the SNF2/RAD54 helicase family and contains also one helicase ATP-binding domain and one helicase C-terminal domain. It may play an important role in gene regulation.



**Figure 1**

**Western blot analysis using the Diagenode antibody directed against CHD1**

Western blot was performed on nuclear extracts from HeLa cells (HeLa NE, 20 µg) with the Diagenode antibody against CHD1 (cat# CS-020-100) diluted 1:500 in TBS-Tween containing 5% skimmed milk. The molecular weight marker (in kDa) is shown on the left; the location of the protein of interest is indicated on the right.