

CHAMP1 polyclonal antibody

Other names: ZNF828, CAMP, CHAMP, C13orf8

Cat. No. C15310250 (CS-PA050-100)

Type: Polyclonal

Source: Rabbit

Lot #: A1018-001

Size: 100 µl

Concentration: not determined

Specificity: Human: positive / Other species: not tested

Purity: Whole antiserum from rabbit containing 0.05% azide.

Storage: Store at -20°C; for long storage, store at -80°C. Avoid multiple freeze-thaw cycles.

Precautions: This product is for research use only. Not for use in diagnostic or therapeutic procedures.

Description: Polyclonal antibody raised in rabbit against human CHAMP1 (chromosome alignment maintaining phosphoprotein 1) using two KLH-conjugated synthetic peptides containing a sequence from the central region of the protein.

Applications

| | Suggested dilution | Results |
|-------|--------------------|---------|
| ELISA | 1:500 | Fig 1 |

*The optimal dilution for other applications should be determined by the end user. For WB we suggest starting with a 1:1,000 dilution

Target description

CHAMP1 (UniProtKB/Swiss-Prot entry Q96JM3) is required for proper alignment of chromosomes at metaphase and their accurate segregation during mitosis. It is involved in the maintenance of spindle microtubules attachment to the kinetochore during sister chromatid biorientation.

Results

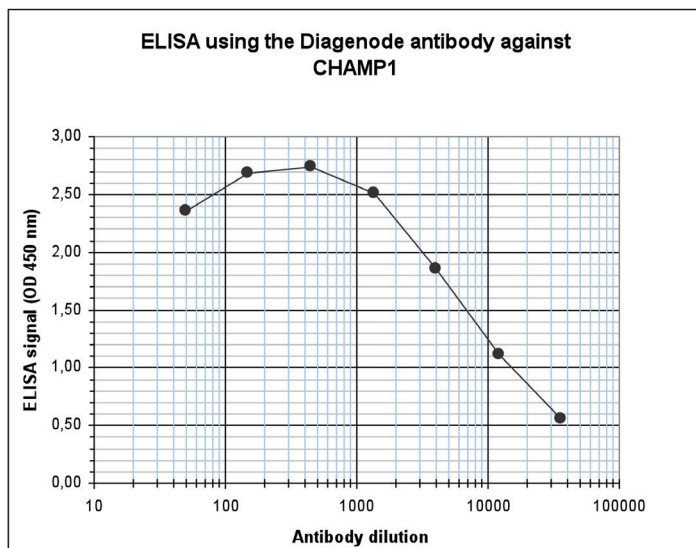


Figure 1. Determination of the antibody titer

To determine the titer of the antibody, an ELISA was performed using a serial dilution of the Diagenode antibody directed against human CHAMP1 (cat. No. CS-PA050-100). The plates were coated with the peptides used for immunization of the rabbit. By plotting the absorbance against the antibody dilution (Figure 1), the titer of the antibody was estimated to be 1:8,500.

Diagenode sa. BELGIUM | EUROPE

LIEGE SCIENCE PARK
Rue Bois Saint-Jean, 3
4102 Seraing (Ougrée) - Belgium
Tel: +32 4 364 20 50
Fax: +32 4 364 20 51
orders@diagenode.com
info@diagenode.com

Diagenode Inc. USA | NORTH AMERICA

400 Morris Avenue, Suite 101
Denville, NJ 07834 - USA
Tel: +1 862 209-4680
Fax: +1 862 209-4681
orders.na@diagenode.com
info.na@diagenode.com

Last update: September 5, 2012