

C/EBP alpha polyclonal antibody - Classic

Cat. No. C15410225-100

Type: Polyclonal	Specificity: Human
Size: 100 µl	Isotype: NA
Concentration: 0.59 µg/µl	Host: Rabbit
Lot No.: 43586	Purity: Purified by antigen-affinity chromatography.
Storage buffer: NA	Storage conditions: Store at -20°C; for long storage, store at -80°C. Avoid multiple freeze-thaw cycles.
Precautions: This product is for research use only. Not for use in diagnostic or therapeutic procedures.	

Description

Polyclonal antibody raised in rabbit against CEBP Alpha (CCAAT/enhancer binding protein (C/EBP), alpha), using a KLH-conjugated synthetic peptide.

Applications

Applications	Suggested dilution *	References
ChIP assay	5 µg/ChIP	Fig 2
Immunoprecipitation	1:100 - 1:500	Fig 1
Western Blotting	1:1,000	Fig 1

* Optimal dilutions/concentrations should be determined by the researcher.

Target Description

Polyclonal antibody raised in rabbit against CEBP Alpha (CCAAT/enhancer binding protein (C/EBP), alpha), using a KLH-conjugated synthetic peptide.

Validation Data

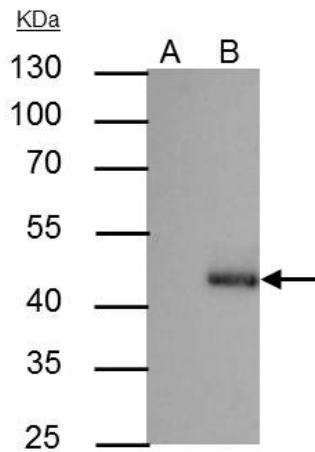


Figure 1. C/EBP alpha antibody IP results

C/EBP alpha antibody immunoprecipitates C/EBP alpha protein in IP experiments. IP Sample: HepG2 whole cell extract A: Control with 3 µg of pre-immune rabbit IgG B: Immunoprecipitation of C/EBP alpha by 3 µg of C/EBP alpha antibody (C15410225) 10% SDS-PAGE The immunoprecipitated C/EBP alpha protein was detected by C/EBP alpha antibody (C15410225) diluted 1:1,000.

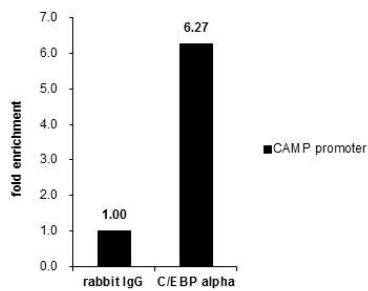


Figure 2. C/EBP alpha antibody ChIP results

ChIP was performed with A549 chromatin extract and 5 µg of either control rabbit IgG or C/EBP alpha antibody. The precipitated DNA was detected by PCR with primer set targeting to CAMP promoter. Results are expressed as fold enrichment over the IgG negative control.