

C/EBP alpha polyclonal antibody - Classic

Cat. No. C15410225

Type: Polyclonal

Source: Rabbit

Lot #: 40058

Size: 25 µl/100 µl

Concentration: 1 µg/µl

Specificity: Human.

Purity: Purified by antigen-affinity chromatography.

Storage: Store at -20°C; for long storage, store at -80°C.

Avoid multiple freeze-thaw cycles.

Precautions: This product is for research use only. Not for use in diagnostic or therapeutic procedures.

Applications

| | Suggested dilution* | Results |
|---------------------|---------------------|----------|
| ChIP assay | 5 µg/ChIP | Figure 2 |
| Immunoprecipitation | 1:100-1:500 | Figure 1 |
| Western blot | 1:1,000 | Figure 1 |

*Optimal dilutions/concentrations should be determined by the researcher.

Results

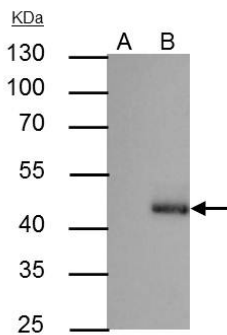


Figure 1. C/EBP alpha antibody IP results

C/EBP alpha antibody immunoprecipitates C/EBP alpha protein in IP experiments. IP Sample: HepG2 whole cell extract A: Control with 3 µg of pre-immune rabbit IgG B: Immunoprecipitation of C/EBP alpha by 3 µg of C/EBP alpha antibody [C15410225] 10% SDS-PAGE The immunoprecipitated C/EBP alpha protein was detected by C/EBP alpha antibody [C15410225] diluted 1:1,000.

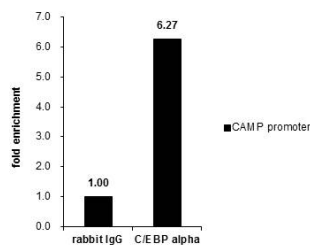


Figure 2. C/EBP alpha antibody ChIP results

ChIP was performed with A549 chromatin extract and 5 µg of either control rabbit IgG or C/EBP alpha antibody. The precipitated DNA was detected by PCR with primer set targeting to CAMP promoter. Results are expressed as fold enrichment over the IgG negative control.

Diagenode sa. BELGIUM | EUROPE

LIEGE SCIENCE PARK
Rue Bois Saint-Jean, 3
4102 Seraing (Ougrée) - Belgium
Tel: +32 4 364 20 50
Fax: +32 4 364 20 51
orders@diagenode.com
info@diagenode.com

Diagenode Inc. USA | NORTH AMERICA

400 Morris Avenue, Suite 101
Denville, NJ 07834 - USA
Tel: +1 862 209-4680
Fax: +1 862 209-4681
orders.na@diagenode.com
info.na@diagenode.com

Last update: September 9, 2014