

## UHRF1 antibody

**Cat. No. C15410258**

Lot: 45098

Size: 100 µg

Type: Polyclonal

Isotype: NA

Source: Rabbit

Concentration: 1.4 µg/µl

Specificity: Human

Purity: Affinity purified

**Storage:** Store at -20°C; for long storage, store at -80°C. Avoid multiple freeze-thaw cycles.

**Precautions:** This product is for research use only. Not for use in diagnostic or therapeutic procedures.

**Description:** Polyclonal antibody raised in rabbit against UHRF1 (ubiquitin-like with PHD and ring finger domains 1), using a recombinant protein.

## Applications

Applications	Suggested dilution	References
ChIP assay	5 µg per ChIP	Fig 1
Immunoprecipitation	1:100 - 1:500	Fig 2
Western blotting	1:100	Fig 3
Immunohistochemistry	1:100 - 1:1,000	Fig 4
Immunofluorescence	1:100 - 1:1,000	Fig 5

\* Optimal dilutions/concentrations should be determined by the researcher.

**Diagenode SA. BELGIUM | EUROPE**

LIEGE SCIENCE PARK  
Rue du Bois Saint-Jean, 3  
4102 Seraing - Belgium  
Tel: +32 4 364 20 50  
Fax: +32 4 364 20 51  
orders.diagenode@hologic.com  
support.diagenode@hologic.com

**Diagenode LLC. USA | NORTH AMERICA**

400 Morris Avenue, Suite 101  
Denville, NJ 07834 - USA  
Tel: +1 862 209-4680  
Fax: +1 862 209-4681  
orders.na@diagenode.com  
info.na@diagenode.com

Last update: November, 2024

## Results

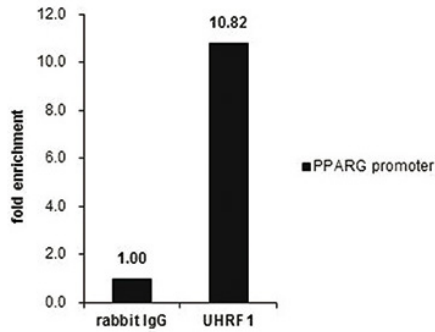


Figure 1: UHRF1 ChIP results

ChIP was performed with HCT116 chromatin extract and 5  $\mu$ g of either control rabbit IgG or UHRF1 antibody. The precipitated DNA was detected by PCR with primer set targeting to PPARG promoter.

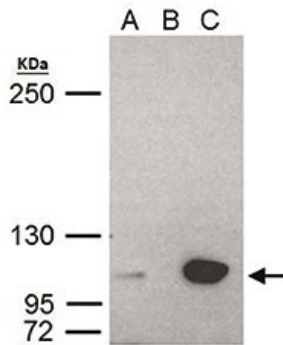


Figure 2: IP results

UHRF1 antibody immunoprecipitates UHRF1 protein in IP experiments. IP Sample: HeLa whole cell extract A. 40  $\mu$ g HeLa whole cell extract B. Control with 2  $\mu$ g of preimmune rabbit IgG C. Immunoprecipitation of UHRF1 protein by 2  $\mu$ g of UHRF1 antibody (C15410258) 5% SDS-PAGE The immunoprecipitated UHRF1 protein was detected by western blot with the UHRF1 antibody (C15410258) diluted 1:1,000.

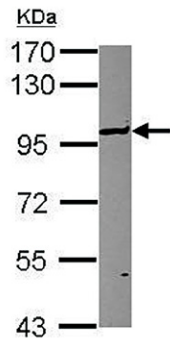


Figure 3: Western blot

Sample: 30  $\mu$ g of HCT116 whole cell lysate 7.5% SDS PAGE UHRF1 diluted 1:1,000.

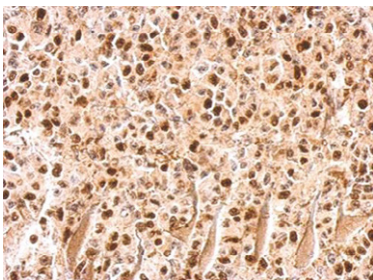


Figure 4: IHC

UHRF1 antibody detects UHRF1 protein on HBL435 xenograft by immunohistochemical analysis. Sample: Paraffin-embedded HBL435 xenograft. UHRF1 antibody (C15410258) dilution: 1:500.

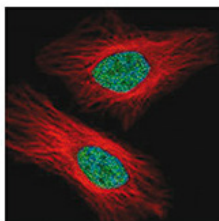


Figure 5: IF

Confocal immunofluorescence analysis of paraformaldehyde-fixed HeLa cells using UHRF1 antibody (Cat. No. C15410258) (Green) at a 1:500 dilution. Red: Alpha-tubulin filaments.