

PRODUCT NAME		
ASH2 polyclonal antibody		
Other names: ASH2L, ASH2L1, ASH2L2, Bre2		
Cat. No. <b>C15410026</b> (pAb-026-050)	Type: Polyclonal	Size: 50 µg/ 25 µl
Lot #: 001	Source: Rabbit	Concentration: 2.0 µg/µl

**Description:** Polyclonal antibody raised in rabbit against human Ash2 (absent, small, or homeotic 2), using a recombinant protein.

**Specificity:** Human: positive  
Other species: not tested

Applications	Suggested dilution	References
Western blotting	1:1,000	Fig1

**Purity:** Protein G purified polyclonal antibody in PBS containing 0.05% azide and 0.05% ProClin 300.

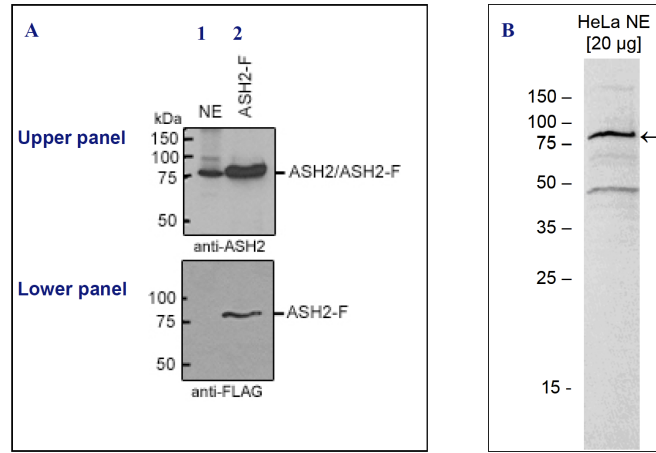
**Storage:** Store at -20°C; for long storage, store at -80°C. Avoid multiple freeze-thaw cycles.

**Precautions:** This product is for research use only. Not for use in diagnostic or therapeutic procedures.

**Last data sheet update:** April 9, 2010

**Target description**

ASH2 (UniProtKB/Swiss-Prot entry Q9UBL3) is a component of the SET1/ASH2 histone methyltransferase (HMT) complex. This complex specifically methylates K4 of histone H3, thereby activating transcription. Methylation of K4 is blocked by pre-methylation of the neighboring K9, a repressor of transcription. This indicates that the SET1/ASH2 HMT complex mediates the crosstalk between K9 methylation and K4 methylation. ASH2 plays a role in hematopoiesis and may be associated with some kinds of leukemia.



**Figure 1**

**Western blot analysis using the Diagenode antibody directed against ASH2**

Western blot was performed on HeLa nuclear extract (HeLa NE, 20 µg) using the Diagenode antibody against ASH2 (Cat. No. pAb-026-050) diluted 1:1,000 in TBS-Tween containing 5% skimmed milk. The molecular weight marker (in kDa) is shown on the left; the location of the protein of interest is indicated on the right.