

ASH1L polyclonal antibody - Classic

Cat. No. C15410304

Type: Polyclonal

Source: Rabbit

Lot #: 001

Size: 100 µl

Concentration: 1 µg/µl

Specificity: Human, mouse, rat

Purity: Purified by peptide affinity chromatography.

Storage: Store at -20°C; for long storage, store at -80°C. Avoid multiple freeze-thaw cycles.

Precautions: This product is for research use only. Not for use in diagnostic or therapeutic procedures.

Applications

	Suggested dilution*	Results
ELISA	1:500-1,000	Figure 1
IHC	1:100-500	
IF	1:100-500	

*Optimal dilution should be determined by the end-user.

Results

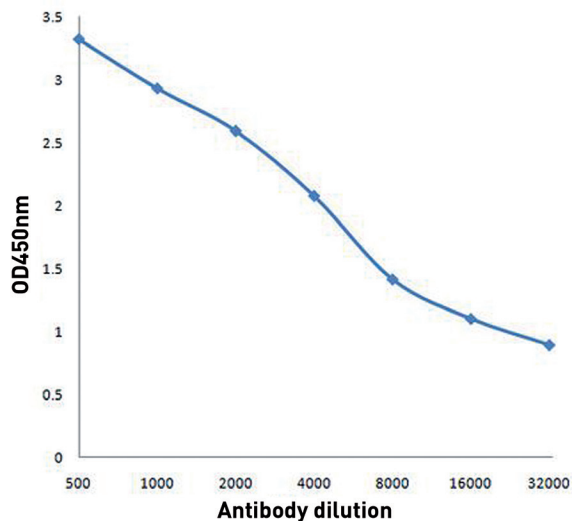


Figure 1. ELISA results

ELISA analysis with 2 µg/100 µl antigen and serially diluted ASH1L antibody (1:500, 1:1,000, 1:2,000, 1:4,000, 1:8,000, 1:16,000, 1:32,000).

Diagenode sa. BELGIUM | EUROPE

LIEGE SCIENCE PARK
Rue Bois Saint-Jean, 3
4102 Seraing (Ougrée) - Belgium
Tel: +32 4 364 20 50
Fax: +32 4 364 20 51
orders@diagenode.com
info@diagenode.com

Diagenode Inc. USA | NORTH AMERICA

400 Morris Avenue, Suite 101
Denville, NJ 07834 - USA
Tel: +1 862 209-4680
Fax: +1 862 209-4681
orders.na@diagenode.com
info.na@diagenode.com

Last update: September 9, 2014