

PRODUCT NAME		
ACTL6B polyclonal antibody		
Other names: ACTL6, BAF53B		
Cat. No. C15310119 (CS-119-100)	Type: Polyclonal	Size: 100 µl
Lot #: A514-004	Source: Rabbit	Concentration: not determined

Description: Polyclonal antibody raised in rabbit against human ACTL6B (actin-like 6B), using a KLH-conjugated synthetic peptide containing a sequence from the central part of the protein.

Specificity: Human: positive
Other species: not tested

Applications	Suggested dilution	References
ELISA	1:500 – 1:1,000	Fig 1
Western blotting	1:1,000	Fig 2

Purity: Whole antiserum from rabbit containing 0.05% azide.

Storage: Store at -20°C; for long storage, store at -80°C. Avoid multiple freeze-thaw cycles.

Precautions: This product is for research use only. Not for use in diagnostic or therapeutic procedures.

Last data sheet update: March 23, 2010

Target description

ACTL6B (UniProt/Swiss-Prot entry O94805) belongs to the family of actin-related proteins (ARPs) which are involved in diverse cellular processes such as vesicular transport, spindle orientation, nuclear migration and chromatin remodeling. ACTL6B is a subunit of the BAF (BRG1/brm-associated factor) complex in mammals, which is thought to antagonize chromatin-mediated transcriptional repression thereby facilitating transcriptional activation of specific genes. Further, ACTL6B may be involved in gene regulation by structural modulation of their chromatin, specifically in the brain.

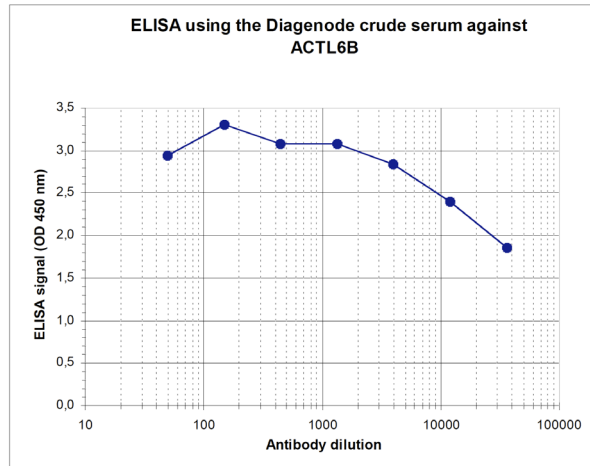


Figure 1
Determination of the titer

To determine the titer, an ELISA was performed using a serial dilution of the Diagenode antibody directed against ACTL6B (Cat. No. CS-119-100). The plates were coated with the peptide used for immunization of the rabbit. By plotting the absorbance against the antibody dilution (Figure 1), the titer of the antibody was estimated to be 1:76,000.

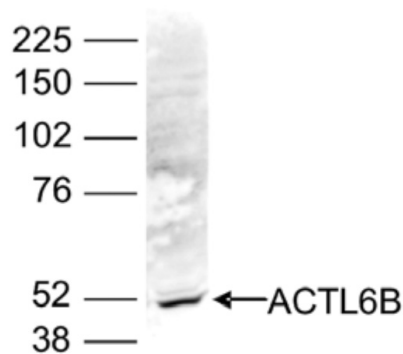


Figure 2
Western blot analysis using the Diagenode antibody directed against ACTL6B

Nuclear extracts of HeLa cells (40 µg) were analysed by Western blot using the Diagenode antibody against ACTL6B (Cat. No. CS-119-100) diluted 1:1,000 in TBS-Tween containing 5% skimmed milk. The position of the protein of interest (expected size: 47 kDa) is indicated on the right; the marker (in kDa) is shown on the left.