

## 6X His epitope tag monoclonal antibody - Classic

**Cat. No.** C15200208

**Type:** Monoclonal

**Source:** Mouse

**Lot #:** 001

**Size:** 100 µg

**Concentration:** 1.0 µg/µl

**Purity:** Affinity purified

**Storage:** Store at -20°C; for long storage, store at -80°C.  
Avoid multiple freeze-thaw cycles.

**Precautions:** This product is for research use only. Not for use in diagnostic or therapeutic procedures.

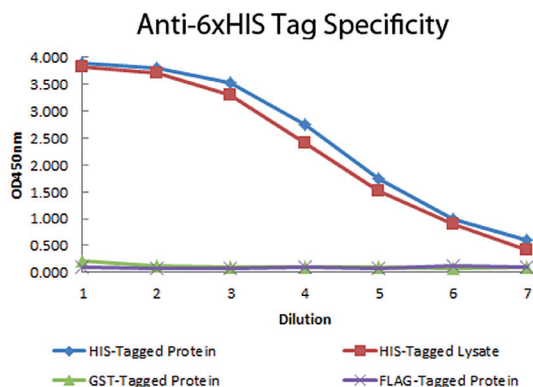
### Applications

	Suggested dilution	Results
ELISA	1:75,000	
Western blot	1:1,000	
Immunoprecipitation	1:200	Figure 1, 2

### Target description

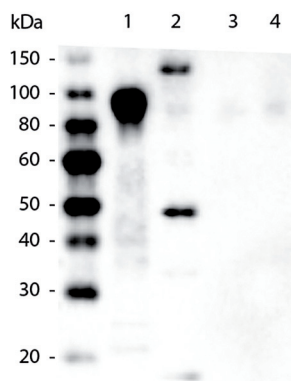
6X His Tag Antibody as well as other Epitope tags are short peptide sequences that are easily recognized by tag-specific antibodies. Due to their small size, epitope tags do not affect the tagged protein's biochemical properties. Most often sequences encoding the epitope tag are included with target DNA at the time of cloning to produce fusion proteins containing the epitope tag sequence. This allows anti-epitope tag antibodies to serve as universal detection reagents for any tag containing protein produced by recombinant means. This means that anti-epitope tag antibodies are a useful alternative to generating specific antibodies to identify, immunoprecipitate or immunoaffinity purify a recombinant protein. The anti-epitope tag antibody is usually functional in a variety of antibody-dependent experimental procedures. Expression vectors producing epitope tag fusion proteins are available for a variety of host expression systems including bacteria, yeast, insect and mammalian cells.

## Results



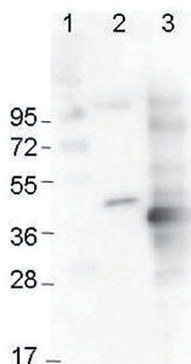
**Figure 1. 6X His Tag antibody ELISA results**

ELISA using the monoclonal 6xHis Tag Antibody. Antigen: HIS-tagged purified protein and E. coli cell lysates expressing HIS-Tagged construct, GST- and FLAG-tagged purified proteins. Coating amount: 0.15ug per well. Primary antibody: 6xHis Tag antibody at 100ug/mL. Dilution series: 2-fold. Mid-point concentration: 200ng/mL. Secondary antibody: Peroxidase mouse secondary antibody at 1:10,000.



**Figure 2. 6X His Tag antibody western blot results**

Western Blot of Mouse anti-6xHis Tag Antibody. Lane 1: 100ng Purified histidine-tagged recombinant protein. Lane 2: 200ng E. coli cell lysate containing histidine-tagged expression construct. Lane 3: 100ng Purified GST-tagged recombinant protein. Lane 4: 100ng Purified FLAG-tagged recombinant protein. Primary antibody used at a 1:5,000 dilution overnight at 4°C. Secondary antibody: Peroxidase mouse secondary antibody at 1:20,000 for 30 min at RT.



**Figure 3. 6X His Tag antibody western blot results**

Western Blot using the monoclonal 6x-His Epitope Tag Antibody showing detection of the 6xHis sequence on N-terminally-tagged (lane 2) and C-terminally-tagged recombinant proteins (lane 3). A molecular weight marker is shown in lane 1.